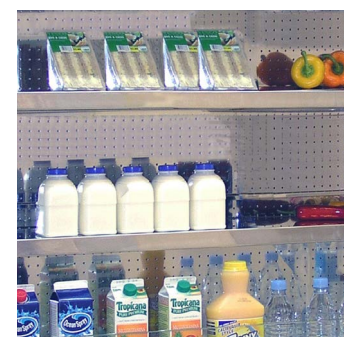


SD60-120HC



## UPRIGHT SLIM MIRRORED STAINLESS STEEL MULTIDECK

The perfect slim line multideck finished off in an attractive mirrored stainless steel finish the SD60 range is the ideal solution for a space saving multideck that maximises display space while keeping the overall footprint of the unit to a minimum.

Ensure you save energy when required with the included night blind fitted as standard on all units perfect for closing off at the end of the day. Don't worry about maintaining your unit with the pull out condenser it couldn't be easier.

MODEL	SHELVES	REFRIGERANT	TEMPERATURE RANGE	DIMENSIONS (mm)	ENERGY RATING	POWER USAGE	KWH/ ANNUM	POWER	WEIGHT (kg)
SD60-60HC	4	R290	+2°C ~ +5°C	H1950 x W600 x D600	F	1842W	6935	⏻	163
SD60-100HC	4	R290	+2°C ~ +5°C	H1950 x W1000 x D600	F	2076W	8760	⏻	218
SD60-120HC	4	R290	+2°C ~ +5°C	H1950 x W1200 x D600	G	2115W	11680	⏻ ⏻	247
SD60-150HC	4	R290	+2°C ~ +5°C	H1950 x W1500 x D600	G	2563W	13150	⏻ ⏻	291
SD60-180HC	4	R290	+2°C ~ +5°C	H1950 x W1800 x D600	G	3363W	14600	⏻ ⏻	330

OPTIONAL EXTRAS	DESCRIPTION
G1-SNACKBASKET6	600mm Snack Basket
G1-SNACKBASKET9	900mm Snack Basket
G1-SNACKBASKET12	1200mm Snack Basket
G1-SNACKBASKET15	1500mm Snack Basket



SCAN FOR MORE INFO

