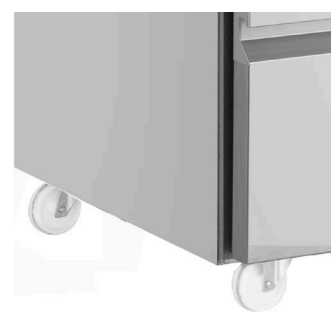


PN29-HC



**INOMAK**  
Refrigerators

## PREMIUM PRECONFIGURED DRAWER & DOOR REFRIGERATED COUNTERS

If you're looking for more refrigerated drawers rather than shelves, then look no further. With a maximum load of 26kg per drawer, you will find no problem organising your produce. The units are made out of high grade AISI 304 stainless steel, all around, inside and out, making the surfaces easy to sanitise and food safe.

Featuring self-closing door, internal corners rounded for easy cleaning and an easily accessible, temperature digital controller and display.

MODEL	DRAWERS	DOOR	GROSS CAPACITY	REFRIGERANT	TEMPERATURE RANGE	DIMENSIONS (mm)	ENERGY RATING	POWER USAGE	KWH/ANNUM	POWER	WEIGHT (kg)
PN29-HC	2	1	274L	R290	+1°C ~ +10°C	H890 x W1345 x D700	<b>B</b>	351W	657	⏻	131
PN229-HC	4	1	429L	R290	+1°C ~ +10°C	H890 x W1790 x D700	<b>B</b>	351W	803	⏻	153
PN2229-HC	6	1	583L	R290	+1°C ~ +10°C	H890 x W2240 x D700	<b>B</b>	440W	949	⏻	209
PN22-HC	4	-	274L	R290	+1°C ~ +10°C	H890 x W1345 x D700	<b>B</b>	351W	657	⏻	132
PN222-HC	6	-	429L	R290	+1°C ~ +10°C	H890 x W1790 x D700	<b>B</b>	351W	803	⏻	155
PN2222-HC	8	-	583L	R290	+1°C ~ +10°C	H890 x W2240 x D700	<b>B</b>	440W	949	⏻	211



RAL COLOUR SYSTEM

SCAN FOR MORE INFO

