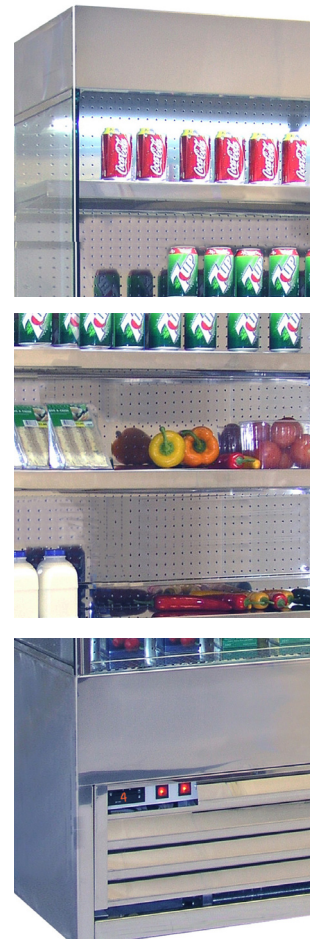


SD60-60HC



UPRIGHT SLIMLINE MIRRORED STAINLESS STEEL MULTIDECK

Description

The perfect slim line multi-deck finished off in an attractive mirrored stainless steel finish the SD60 range is the ideal solution for a space saving multi-deck that maximises display space while keeping the overall footprint of the unit to a minimum.

Ensure you save energy when required with the included night blind fitted as standard on all units perfect for closing off at the end of the day. Don't worry about maintaining your unit with the pull out condenser it couldn't be easier.



Features

Mirror finish 304 grade stainless steel exterior and interior

4 Heavy duty adjustable shelves

Adjustable feet

Night blind fitted as standard

Internal illumination

Tempered glass side panels

Clear acrylic shelf edge risers

Condensing unit pull out for easy maintenance

MODEL	SHELVES	REFRIGERANT	TEMPERATURE RANGE	DIMENSIONS (mm)	ENERGY RATING	POWER USAGE	KWH/ANNUM	POWER	WEIGHT (kg)
SD60-60HC	4	R290	+2°C / +5°C	H1950 x W600 x D700	F	1842W	6935	13amp	163
SD60-100HC	4	R290	+2°C / +5°C	H1950 x W1000 x D600	F	2076W	8760	13amp	218
SD60-120HC	4	R290	+2°C / +5°C	H1950 x W1200 x D600	G	2115W	11680	13amp x 2	247
SD60-150HC	4	R290	+2°C / +5°C	H1950 x W1500 x D600	G	2563W	13150	13amp x 2	291
SD60-180HC	4	R290	+2°C / +5°C	H1950 x W1800 x D600	G	3363W	14600	13amp x 2	330

OPTIONAL EXTRAS (Applicable Units)

600mm Snack basket

1200mm Snack basket

1500mm Snack basket