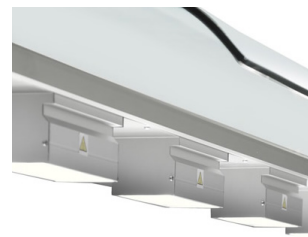


MVV714



FREEST-ANDING GASTRONORM BAIN MARIE WITH HEATED GANTRY, SNEEZE GUARD & AMBIENT/HEATED STORAGE

Description

Allowing access to the free-standing bain marie from both sides along with a choice of single and double sneeze guards Inomak allows ultimate versatility. Have your choice of heated or ambient base storage with sliding door access.

1
YEAR
WARRANTY

Features

High grade AISI 304 stainless steel exterior & interior

Open top & glass canopy variations

Heated & ambient storage cupboards

Wet well accepts GN1/1 up to 150mm

Easy access integrated drain tap

Full width heated gantry

MODEL	SNEEZE GUARD	BASE TYPE	CAPACITY*	HALOGEN LAMPS	TEMPERATURE RANGE	DIMENSIONS (mm)	POWER USAGE	POWER	WEIGHT (kg)
MVV711	Single	Ambient	3 x GN1/1*	3	Up To +90°C	H1310 x W1105 x D700	2390W	13amp	77
MVV714	Single	Ambient	4 x GN1/1*	4	Up To +90°C	H1310 x W1410 x D700	2520W	13amp	91
MVV718	Single	Ambient	5 x GN1/1*	5	Up To +90°C	H1310 x W1795 x D700	3250W	25amp	112
MJV711	Single	Heated	3 x GN1/1*	3	Up To +90°C	H1310 x W1105 x D700	4240W	25amp	81
MJV714	Single	Heated	4 x GN1/1*	4	Up To +90°C	H1310 x W1410 x D700	4370W	25amp	95
MJV718	Single	Heated	5 x GN1/1*	5	Up To +90°C	H1310 x W1795 x D700	5100W	30amp	116
MRV711	Double	Ambient	3 x GN1/1*	3	Up To +90°C	H1310 x W1105 x D700	2390W	13amp	82
MRV714	Double	Ambient	4 x GN1/1*	4	Up To +90°C	H1310 x W1410 x D700	2520W	13amp	97
MRV718	Double	Ambient	5 x GN1/1*	5	Up To +90°C	H1310 x W1795 x D700	3250W	25amp	120
MQV711	Double	Heated	3 x GN1/1*	3	Up To +90°C	H1310 x W1105 x D700	4240W	25amp	86
MQV714	Double	Heated	4 x GN1/1*	4	Up To +90°C	H1310 x W1410 x D700	4370W	25amp	101
MQV718	Double	Heated	5 x GN1/1*	5	Up To +90°C	H1310 x W1795 x D700	5100W	30amp	124

*Find our full range of gastronorm pans on [page 5](#).