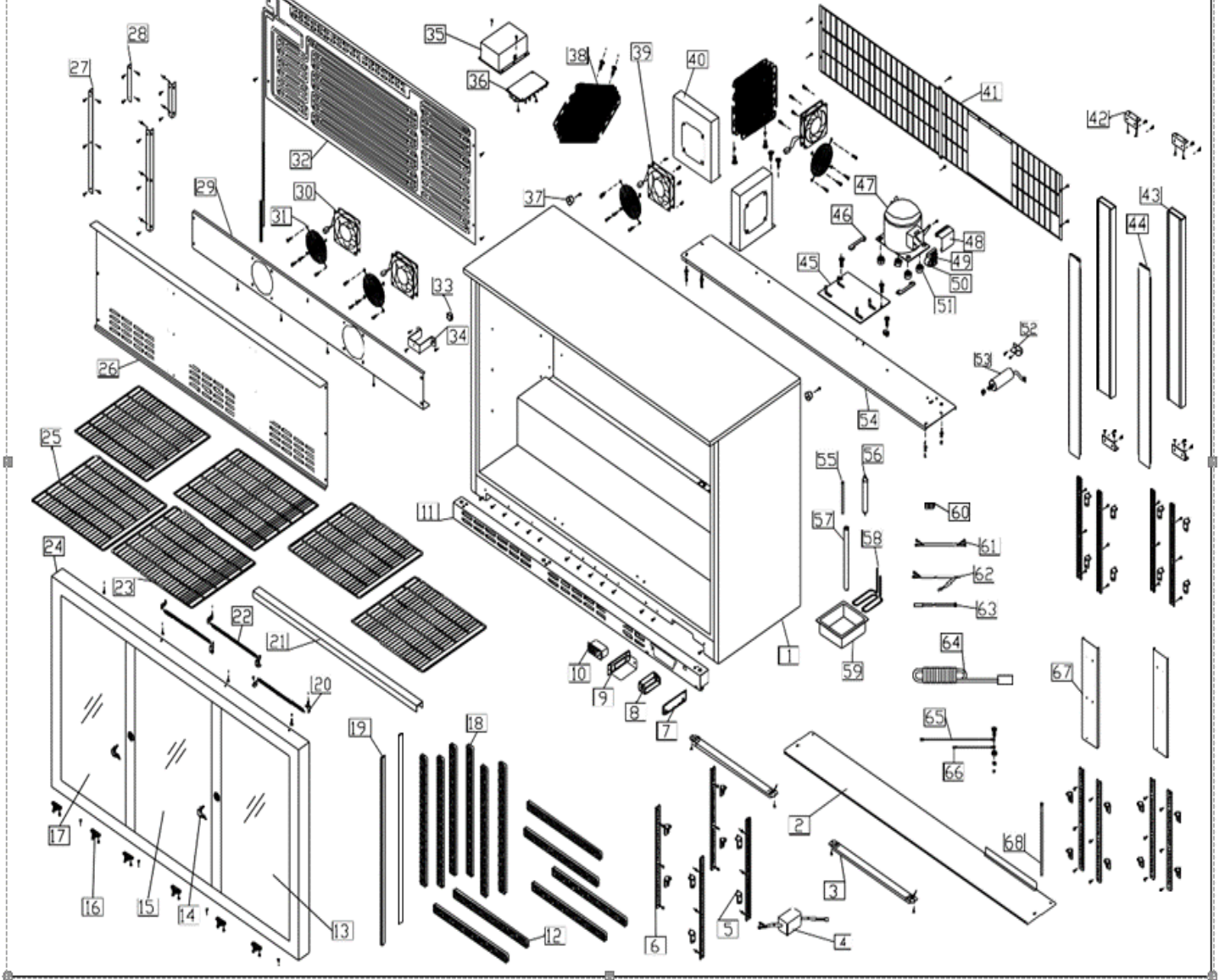


# LOWBAR3SL

Exploded parts diagram



# Exploded View of BZ-LOWBAR3SL with CAREL Controller



Part Number	Number	Description	Qty
***	1	Cabinet	1
***	2	Front Plate for Carel Controller	1
W4-LED01	3	Led Light for Bar1 and Bar3	2
W4-LEDTRANSFORME	4	Transformer for Led Light	1
W4-CLIP01	5	Plastic Clip	24
W4-RACK02	6	Ladder Rack	12
***	7	Controller box back lid	1
***	8	Controller box front lid	1
***	9	Controller box	1
W4-CONTROLLER04	10	CAREL Controller	1
***	11	Bar3 Kick Plate	1
***	12	Short Brushes for Sliding Door	6
W4-DOOR32	13	Right Glass Door	1
W4-KEY	14	Key	4
W4-DOOR33	15	Middle Glass Door	1
W4-ROLLER02	16	Door Wheel	6
W4-DOOR34	17	Left Glass Door	1
***	18	Long Brushes Sliding Door	6
***	19	Gaskets for Sliding Door	3
***	20	Fixing clip	3
***	21	Sliding Door Guide	2
W4-SPRING01	22	Spring	3
W4-SHELF04	23	Middle Shelf	2
W4-RIM05	24	Sliding Door Surround	1
W4-SHELF02	25	Wire Shelf	4
***	26	Evap Cover	1
***	27	Long Bracket	2
***	28	Short Bracket	2
***	29	Evap Fan Panel	1
C5-AXIAL120MM	30	Evaporator Fan	2
***	31	Fan Guard	4
W4-EVAP03	32	Roll Bond Evaporator	1
W4-SWITCH01	33	Lamp switch	1
***	34	Steel Support	1
W4-FIXBOX	35	Plastic box for Transformer	1
***	36	Transformer for CAREL Controller	1
***	37	Rubber Backstop	2
W4-COND01	38	Condenser	2
W4-FAN02	39	Condenser Fan	2
***	40	Condenser box	2

***	41	Back Cover	1
***	42	Fixture board	4
***	43	Plastic beam	2
***	44	Steel item	2
***	45	Moving board	1
W4-BRACKET01	46	Compressor fixture item	2
W4-COMP02	47	Compressor	1
W4-COVER02R	48	Electric cover	1
W4-STARTER02	49	Starter	1
W4-OVERLOAD02	50	Overheat and overload protector	1
***	51	Rubber grommet	4
***	52	Capacitor Holder	1
W4-CAP02	53	Capacitor for Compressor	1
***	54	Compressor Plate	1
***	55	Process tube	1
W4-FILTER01	56	Drier	1
***	57	Plastic tube	1
***	58	Vaporizing Coil	1
W4-TRAY01	59	Water box	1
***	60	Wire clip	1
***	61	Short wire sheath	1
***	62	Fan wire	1
W4-SENSOR03	63	Temperature sensor for CAREL Controller	1
***	64	Power Wire and Plug	1
***	65	Long earth wire	1
***	66	Short earth wire	1
***	67	Fix item	2
***	68	Cu Connect tube	1

\*\*\* Please contact Spares for assistance \*\*\*