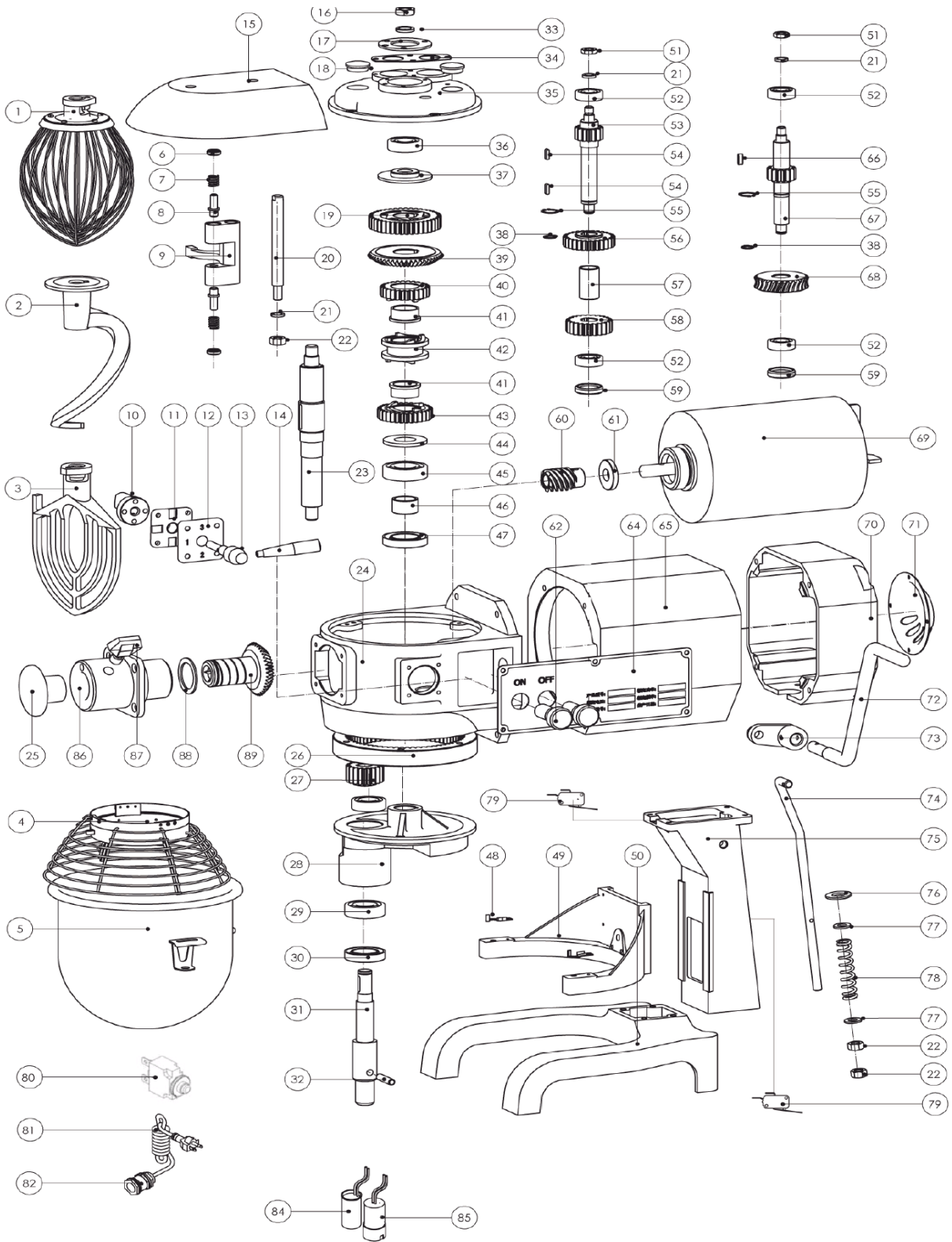


FMX20

Exploded parts diagram







Part Number	Number	Description	Qty
B3-1161	1	Wire Whip	1
***	2	Spiral Dough Hook	1
***	3	Flat Beater	1
***	4	Safety Guard	1
B3-MX201155	5	Bowl Assembly	1
***	6	Plunger – Shifter Yoke	2
***	7	Spring	2
***	8	Pin Shaft	2
***	9	Shifting Yoke	1
***	10	Cam-Gear Shifter	1
***	11	Plate-Shifter Index	1
***	12	Handle Shifter Cove	1
***	13	Handle Shifter	1
***	14	Speed Handle	1
***	15	Gear Case Gland	1
***	16	Nut	1
***	18	Cover	2
***	19	Gear	1
***	20	Declutch Shift Shaft	1
***	21	Ring	3
B3-11622	22	Nut	3
***	23	Main Shaft	1
***	24	Gear Box	1
***	25	Plug Attachment Hub	1
***	26	Internal Gear	1
***	27	Gear	1
***	28	Operating Shelf	1
***	29	Bearing	1
***	30	Oil Seal	1
***	31	Working Shaft	1
***	32	Retainer Pin	1
***	33	Spring	1
***	34	Pressing Plate	1
***	35	Transmission Shaft Support	1
***	36	Bearing	2
***	37	Space Lower	1
***	38	Circlips for Shaft	2
***	39	Ring Gasket	1
***	40	Gear	1
***	41	Bushing	2
***	42	Sleeve	1
***	43	Claw Type Gear Wheel	1
***	44	Ring	1
***	45	Bearing	1

Part Number	Number	Description	Qty
***	46	Bushing	1
***	47	Oil Seal	1
***	48	Ball Fixing Clip	2
***	49	Support	1
***	50	Case	1
***	51	Nut	2
***	52	Bearing	4
***	53	Mid-gear Wheel	1
***	54	Key	2
***	55	Circlips for Shaft	2
***	56	Gear	1
***	57	Bushing	1
***	58	Gear	1
***	59	Plug Cover	2
***	60	Worm Wheel	1
***	61	Oil Seal	1
B3-11662	62	On/Off Switch	1
***	64	Branding Plate	1
***	65	Motor Box	1
***	66	Key	1
***	67	Shaft Worm Gear	1
***	68	Gear	1
***	69	Motor	1
***	70	Back Housing	1
***	71	Back Cover	1
***	72	Handle Shifter	1
***	73	Crank Lever	1
B3-11674	74	Connecting Rod	1
B3-11675	75	Stud	1
B3-11676	76	Clamp Plate	1
***	77	Clamp Plate	2
B3-11678	78	Spring	1
***	79	Distance Switch	1
***	80	Overload Switch	1
***	81	Power Cord	1
***	82	Power Supply Waterproof Connectors	1
***	84	Capacitor	1
***	85	Capacitor	1
***	86	Attachment Hub	1
***	87	Spring	1
***	88	Circlips	1
***	89	Gear	1

*** Please contact Spares for assistance***

