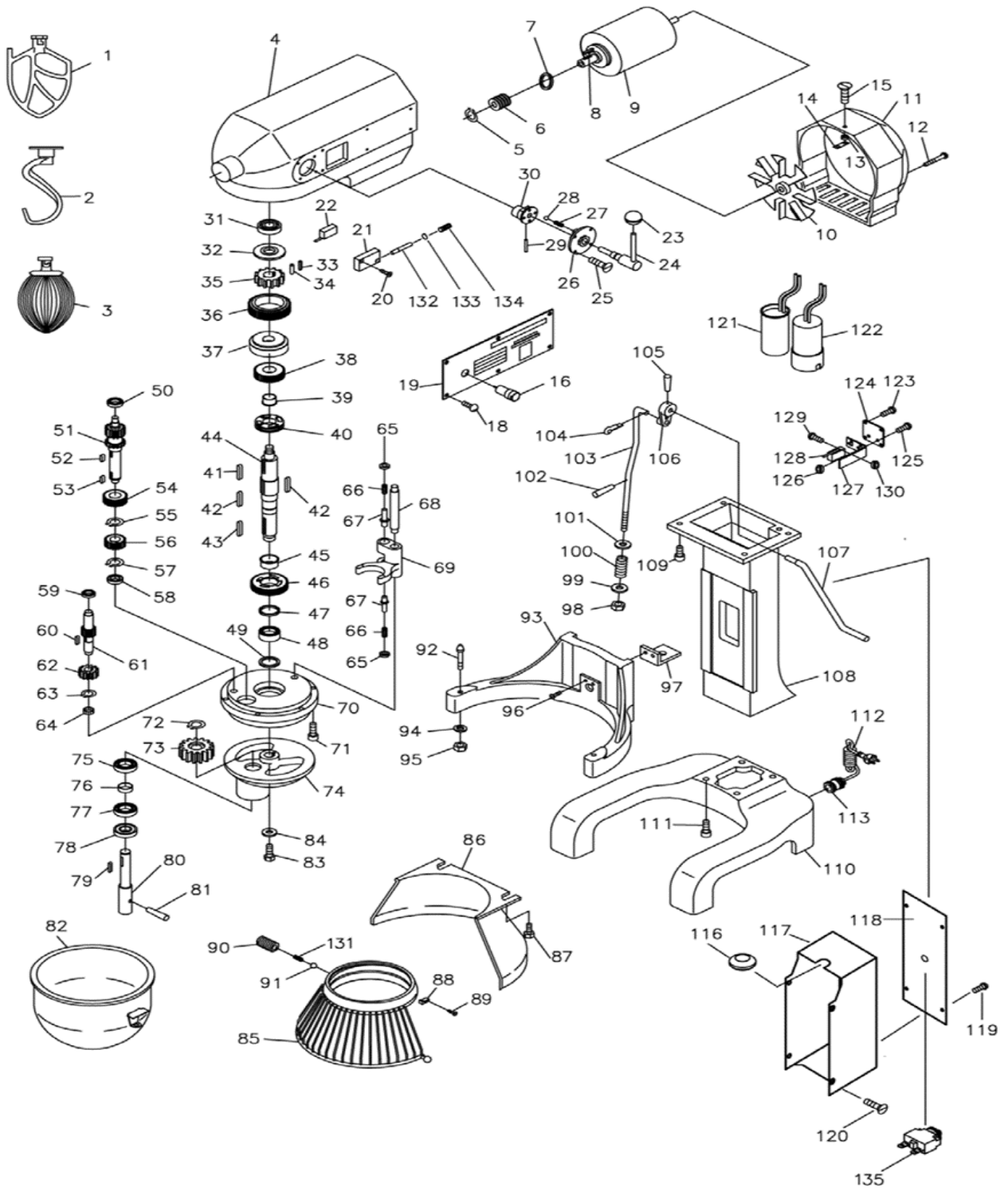


FMX10

Exploded parts diagram







Part Number	Number	Description	Qty
B3-FMX101151	1	Flat Beater	1
B3-FMX101152	2	Hook	1
***	3	Wire Whip	1
***	4	Gear Box	1
***	5	Circlips for Shaft	1
***	6	Worm Pole	1
***	7	Oil Seal	1
***	8	Key	1
***	9	Motor	1
***	10	Fan	1
B3-FMX1011511	11	Back Cover	1
***	12	Nut M5*60	2
***	13	Spring Washer	1
***	14	Connector	1
***	15	Nut M4*8	2
***	16	On/Off Switch	1
***	18	Nut M4*8	6
***	19	Brand Plate	1
***	20	Nut M4*20	2
***	21	Micro Switch	1
B3-FMX1011522	22	Distance Switch	1
***	23	Knob	1
***	24	Speed Handle	1
***	25	Nut M4*8	4
***	26	Fix Seat	1
***	27	Spring	2
***	28	Steel Ball	2
***	29	Retainer Spring	1
***	31	Knob	1
***	32	Deep Groove Ball Bearing	1
***	33	Plug	8
***	34	Spring	8
***	35	Roller 6*10	1
***	36	Super Machine Parts	1
***	37	Ring Gasket	1
***	38	Gear Combination	1
***	39	Gear Shaft Sleeve	1
***	40	Claw Type Clutch	1
***	41	Key 5*25	1
***	42	Key 5*30	2
***	43	Key 5*30	1
***	44	Main Shaft	1
***	45	Gear Shaft Sleeve	1
***	46	Gear	1

Part Number	Number	Description	Qty
***	47	Spring Washer	1
***	48	Bearing	1
***	49	Oil Seal	1
***	50	Bearing	1
***	51	Gear Shaft	1
***	52	Key 5*10	1
***	53	Key 5*10	1
***	54	Gear Combination	1
***	55	Circlips for Shaft	1
***	56	Gear	1
***	57	Circlips for Shaft	1
***	58	Bearing	1
***	59	Bearing	1
***	60	Key 5*14	1
***	61	Shaft Worm Gear	1
***	62	Worm Gear	1
***	63	Circlips for Shaft	1
***	64	Bearing	1
***	65	Control Nut	2
***	66	Spring	2
***	67	Fork Pin	2
***	68	Declutch Shift Shaft	1
***	69	Shifting Yoke	1
***	70	Inner Gear	1
***	71	Hexagon Socket Cap Screws	6
***	72	Circlips for Shaft	1
***	73	Planetary Gear	1
***	74	Operating Shelf	1
***	75	Bearing	1
***	76	Running Shaft Support	1
***	77	Bearing	1
***	78	Oil Seal	1
***	79	Key 5*20	1
***	80	Running Spindle	1
***	81	Retainer Spring	1
B3-MX11582	82	Bowl	1
***	83	Pan Head Screw	1
***	84	Moving Frame Clamp	1
***	85	Front Shield	1
***	86	Rear Shield	1
***	87	Hexagonal Head Bolt	2
B3-ZMX60011588	88	Bump Pin Block	1
***	89	Countersunk Screw	2
***	90	Allen Flat End Set Screw	5

Part Number	Number	Description	Qty
***	91	Steel Ball	5
***	92	Taper Pin Column	2
***	93	Support	1
***	94	Spring Washer	2
***	95	Type 1 Hexagonal Nut	2
***	96	Cross Recessed Countersunk Screw	2
***	97	Support Lifting Bracket	1
***	98	Hexagon Lock Nut	1
***	99	Flat Washer	1
***	100	Compression Spring	1
***	101	Flat Washer	1
***	102	Elastic Cylindrical Pin	1
***	103	Connecting Rod	1
***	104	Cotter Pin	1
***	105	Retainer Spring	1
***	106	Crank Lever	1
***	107	Handle	1
***	108	Stud	1
***	109	Hexagonal Head Bolt	4
***	110	Base Foundation	1
***	111	Hexagonal Head Bolt	4
***	112	Power Cord	1
***	113	Power Supply Waterproof Connectors	1
***	116	Channelling Coil	1
***	117	Electrics Box	1
***	118	Electrics Box Cover Plate	1
***	119	M4*8 Stainless Steel Pan Head Screws	4
***	120	M4*8 Cross Recessed Countersunk Head Screw	4
B3-ZMX6000	121	Capacitor	1
***	122	Capacitor	1
***	123	Cross Recess Pan Head Screw	4
***	124	Travel Switch Fixed Plate	1
***	125	Cross Recess Pan Head Screw	2
***	126	Type 1 Hexagonal Nut	2
***	127	Travel Switch	1
***	128	Distance Switch	1
***	129	Cross Recess Pan Head Screw	2
***	130	Type 1 Hexagonal Nut	2
***	131	Shield Compression	1
***	132	Switch Shaft Pin	1
***	133	Split Washer	1
***	134	Switch Shaft Pin Compression Spring	1
***	135	Overload Switch	1

*** Please contact Spares for assistance ***

