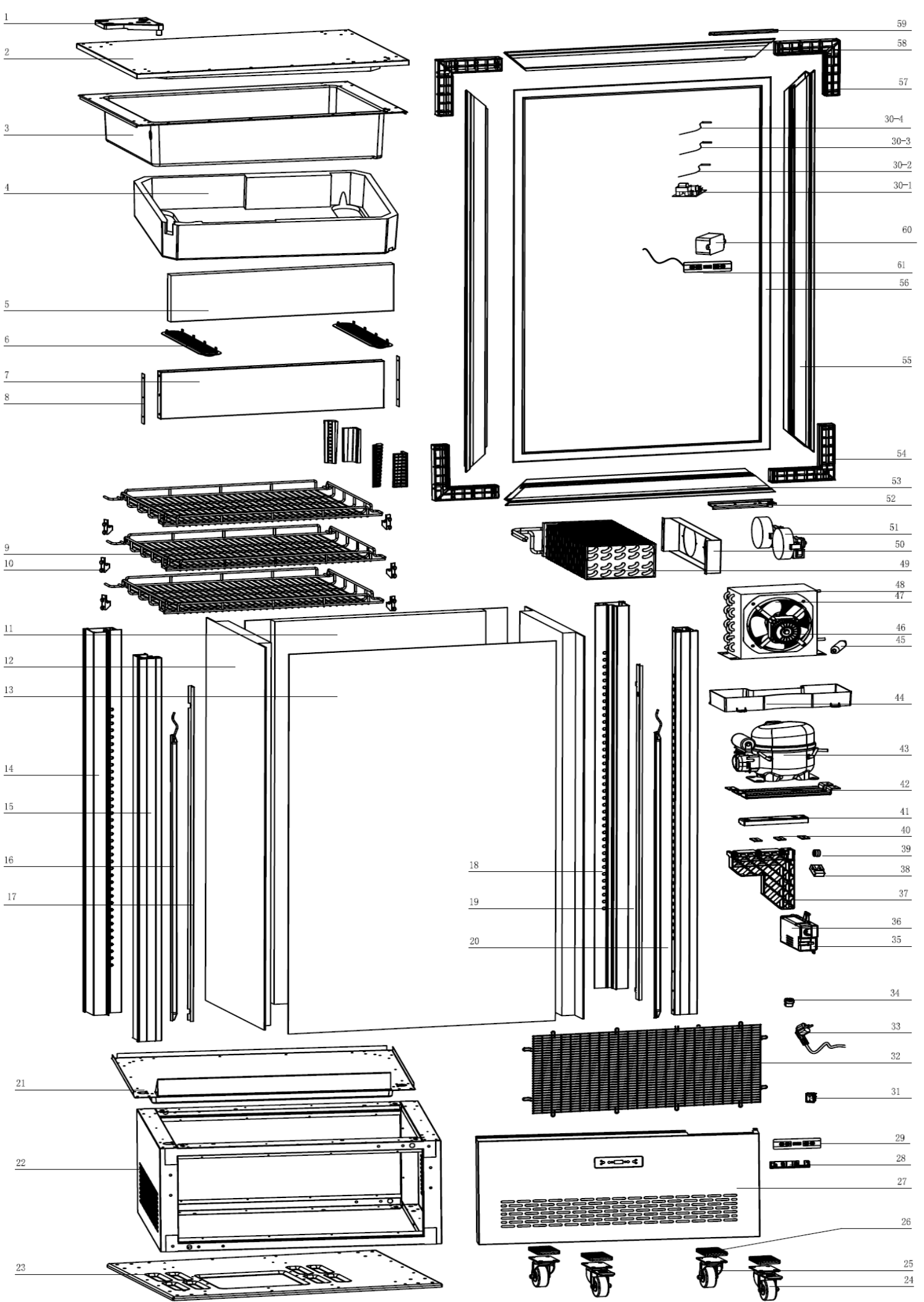


CD270L

Exploded parts diagram





- 59
- 58
- 57
- 30-4
- 30-3
- 30-2
- 30-1
- 60
- 61
- 56
- 55
- 54
- 53
- 52
- 51
- 50
- 49
- 48
- 47
- 46
- 45
- 44
- 43
- 42
- 41
- 40
- 39
- 38
- 37
- 36
- 35
- 34
- 33
- 32
- 31
- 29
- 28
- 27
- 26
- 25
- 24



Part Number	Number	Description	Qty
***	1	Upper Hinge Fixing Plate	1
***	2	Top Cover	1
***	3	Evap Box	1
***	4	Evap Insulation	1
***	5	Insulation	1
***	6	Ventilation Panel	2
***	7	Upper box Baffle	1
***	8	Baffle Box Connector	2
B4-SHELF270	9	Shelf	3
B4-SHELFBRKT270	10	Shelf Bracket	12
***	11	Back Glass	1
***	12	Side Glass	1
***	13	Door Glass	1
***	14	Back Left Pillar	1
***	15	Front Left Pillar	1
***	16	LED Lights	1
***	17	Front Left Pillar Trim	1
***	18	Back Right Pillar	1
***	19	Front Right Pillar Trim	1
***	20	Front Right Pillar	1
***	21	Box Chassis	1
***	22	Lower Frame	1
***	23	Back Plate	1
***	24	Castors (Braked)	2
***	25	Castors (Unbraked)	2
***	26	Castors Pad	4
B4-PANEL01	27	Front Panel	1
***	28	Thermostat Bracket	1
B4-LABEL	29	Display Label	1
B4-A170305	30.1	Main PCB	1
B4-PROBE02	30.2	Defrost Probe	1
B4-PROBE01	30.3	Temp Probe	1
B4-SENSOR01	30.4	High Temp Sensor	1
***	31	Switch	1
***	32	Grille Panel	1
***	33	Power Cord	1
***	34	Wire Clip	1
***	35	Main PCB Box Back Pane	1
***	36	Main PCB Box Cover	1
***	37	Door Pin Support	1
***	38	Pulley Support	1
***	39	Door Pulley	1
***	40	Door Pin Support Pad	1
***	41	Door Pin Support Cover	1
***	42	Compressor Fixing Plate	1

B4-COMP06	43	Compressor	1
B4-DRIPTRAY01	44	Vaporising Tray	1
***	45	Drier	1
C5-MOTOR10W	46	Cond Fan Motor	1
***	47	Cond Fan Blade	1
***	48	Condenser	1
***	49	Evaporator	1
***	50	Fan Motor Bracket	1
B4-EVAPFAN01	51	Evap Fan Motor	2
***	52	Bottom Door Frame Fixing Plate	1
***	53	Lower Door Frame	1
***	54	Door Frame Square Connector	2
***	55	Door Frame Side	2
***	56	Door Seal	1
***	57	Door Frame Square Connector	2
***	58	Upper Door Frame	1
***	59	Upper Door Frame Fixing Plate	1
B4-LEDTRANS02	60	LED Transformer	1
B4-A170305	61	Display	1

*** Please contact Spares for assistance ***