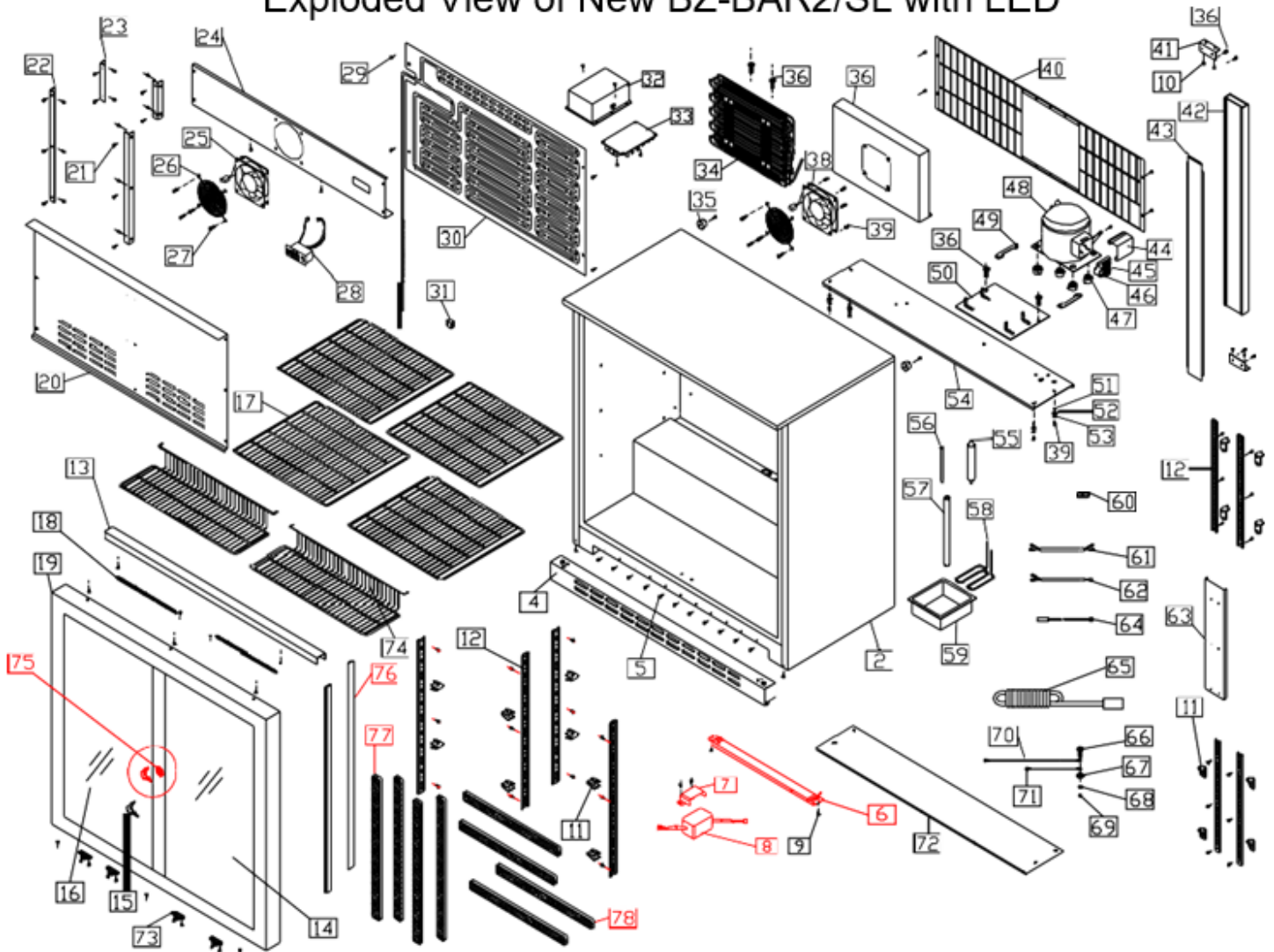


BAR 2SL (MKIII)

Exploded parts diagram



Exploded View of New BZ-BAR2/SL with LED



| Part Number | Number | Description | Qty |
|------------------|--------|--|-----|
| *** | 2 | Body | 1 |
| W5-GRILLE05 | 4 | Kick Plate (Front Grill) | 1 |
| *** | 5 | Philips screw | 19 |
| *** | 6 | Led Light for Bar2 | 1 |
| *** | 7 | Transformer Holder | 1 |
| W4-LEDTRANSFORME | 8 | Transformer for Led Light | 1 |
| *** | 9 | Philips screw | 40 |
| W4-CLIP01 | 11 | Plastic Clip | 16 |
| W4-RACK01 | 12 | Plastic Pilaster | 8 |
| *** | 13 | Sliding Door Guide (Aluminum item) for BAR2/SL | 2 |
| W4-DOOR13 | 14 | Sliding Right glass door | 1 |
| W4-KEY | 15 | Key | 2 |
| W4-DOOR14 | 16 | Sliding Left glass door | 1 |
| W4-SHELF02 | 17 | Shelf | 4 |
| W4-SPRING01 | 18 | Spring | 2 |
| *** | 19 | Sliding Door Surround | 1 |
| *** | 20 | Inner lid | 1 |
| *** | 21 | Philips screw | 22 |
| *** | 22 | Long item | 2 |
| *** | 23 | Short item | 2 |
| *** | 24 | Inner fan board | 1 |
| C5-AXIAL120MM | 25 | Evaporator Fan | 1 |
| *** | 26 | Fan lid | 2 |
| *** | 27 | Screw | 8 |
| W4-CONTROLLER03 | 28 | Controller MKIII | 1 |
| W4-CONTROLLER04 | 28 | Controller MKIII – Carel | 1 |
| *** | 29 | Philips screw | 4 |
| W4-EVAP02 | 30 | Roll Bond Evaporator | 1 |
| W4-SWITCH01 | 31 | Lamp switch | 1 |
| W4-FIXBOX | 32 | Plastic box for Transformer | 1 |
| M4-UCR140 | 33 | Transformer for Controller | 1 |
| W4-COND02 | 34 | Condenser | 1 |
| *** | 35 | Rubber Backstop | 2 |
| *** | 36 | Screw | 8 |
| *** | 37 | Condenser box | 1 |
| W4-FAN02 | 38 | Condenser Fan | 1 |
| *** | 39 | Screw | 12 |
| *** | 40 | Back Cover | 1 |
| *** | 41 | Fixture board | 2 |
| W4-BEAM | 42 | Plastic beam | 1 |

| | | | |
|---------------|----|---|----|
| W4-STEEL | 43 | Steel item | 1 |
| W4-COVER02R | 44 | Electric cover | 1 |
| W4-STARTER02 | 45 | Starter | 1 |
| W4-OVERLOAD02 | 46 | Overheat and overload protector | 1 |
| W4-CAP02 | | Capacitor for TG1111Y Compressor | 1 |
| BZ-BAR1-044 | 47 | Rubber grommet | 1 |
| W4-COMP02 | 48 | Compressor | 1 |
| W4-BRACKET01 | 49 | Compressor fixture item | 4 |
| *** | 50 | Moving board | 1 |
| *** | 51 | Hexagon nut | 4 |
| *** | 52 | Flat washer | 12 |
| *** | 53 | spring washer | 12 |
| *** | 54 | Compressor Board | 1 |
| W4-FILTER01 | 55 | Filter and Drier | 1 |
| *** | 56 | Process tube | 1 |
| *** | 57 | Plastic tube | 1 |
| *** | 58 | Vaporizing Coil | 1 |
| W4-TRAY01 | 59 | Water box | 1 |
| *** | 60 | Wire clip | 1 |
| *** | 61 | Short wire sheath | 1 |
| *** | 62 | Fan wire | 1 |
| *** | 63 | Fix item | 1 |
| W4-SENSOR01 | 64 | Temperature sensor – MKIII (Not Carel) | 1 |
| *** | 65 | Power Wire and Plug | 1 |
| *** | 66 | Screw | 1 |
| *** | 67 | Spring washer | 1 |
| *** | 68 | Flat washer | 1 |
| *** | 69 | Hexagon nut | 1 |
| *** | 70 | Long earth wire | 1 |
| *** | 71 | Short earth wire | 1 |
| *** | 72 | Front board | 1 |
| W4-ROLLER02 | 73 | Door wheel | 4 |
| W4-SHELF02B | 74 | ETL Bottom Shelf for Bar2 | 2 |
| W4-KEY01 | 75 | Lock and Key for Bar2/SL and Bar3/SL Sliding Door | 1 |
| *** | 76 | Black Gaskets for Sliding Door | 2 |
| *** | 77 | Long Brushes for Sliding Door | 4 |
| *** | 78 | Short Brushes for Sliding Door | 4 |

*** Please contact Spares for assistance ***