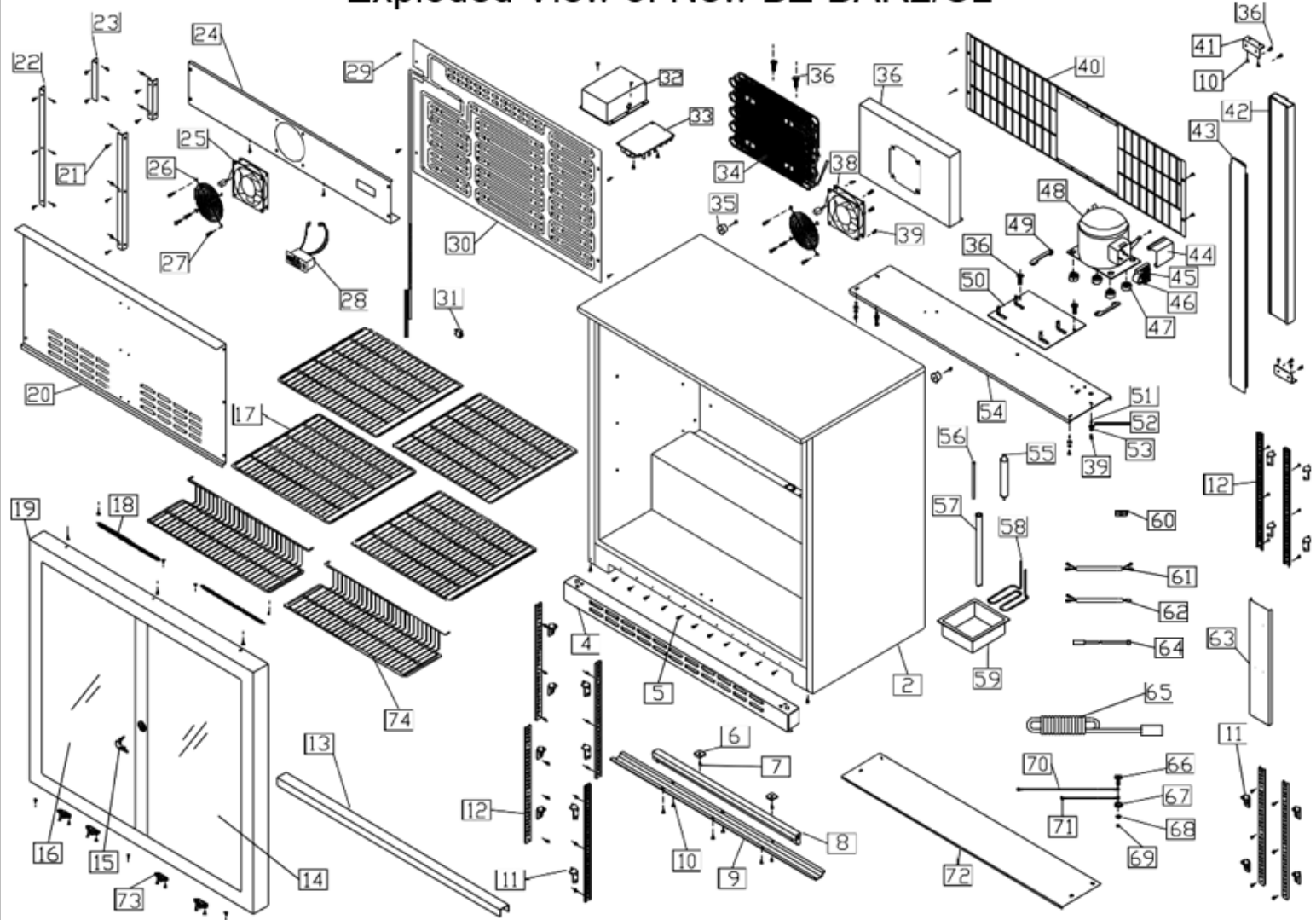


BAR 2 & BAR 2SS (MKIII)

Exploded parts diagram



Exploded View of New BZ-BAR2/SL



Part Number	Number	Description	Qty
W4-HINGE01	1	Top hinge	2
***	2	Cabinet	1
W4-HINGE02	3	Bottom hinge	2
***	4	BAR2 Kick Plate	1
***	5	Philips screw	19
W4-LED02	6	Led Light for Bar2	1
***	7	Transformer Holder	1
W4-LEDTANSFORME	8	New Transformer for Led Light	1
***	9	Philips screw	40
W4-CLIP01	11	Plastic Clip	16
W4-RACK01	12	Ladder Rack	8
W4-DOOR25	13	BAR2 Right Glass Door	1
W4-DOOR23SS	13	BAR2 Right Glass Door SS	1
W4-KEY	14	Key	4
W4-HANDLE02	15	Plastic Handle	2
W4-HANDLE3	15	Chrome Handle	2
W4-DOOR26	16	BAR2 Left Glass Door	1
W4-DOOR22S	16	BAR2 Left Glass Door SS	1
W4-SHELF02	17	Shelf	4
***	18	Screw	4
W4-SEAL02A	19	Gasket for Glass Door	2
W4-SEAL02SS	19	Gasket for Glass Door SS	2
BZ-BAR2-009	20	Inner lid	1
***	21	Philips screw	22
***	22	Long item	2
***	23	Short item	2
***	24	Inner fan board	1
C5-AXIAL120MM	25	Evaporator Fan	1
***	26	Fan lid	2
***	27	Screw	8
W4-CONTROLLER03	28	Controller MKIII	1
W4-CONTROLLER04	28	Controller MKIII – Carel	1
***	29	Philips screw	4
W4-EVAP02	30	Roll Bond Evaporator	1
W4-SWITCH01	31	Lamp switch	1
W4-FIXBOX	32	Plastic box for Transformer	1
M4-UCR140	33	Transformer for Controller MKIII	1
W4-COND02	34	Condenser	1
***	35	Rubber Backstop	2
***	36	Screw	8
***	37	Condenser box	1
W4-FAN02	38	Condenser Fan	1

***	39	Screw	12
***	40	Back Cover	1
***	41	Fixture board	2
***	42	Plastic beam	1
***	43	Steel item	1
W4-COVER02R	44	Electric cover	1
W4-STARTER02	45	Starter (2016>)	1
W4-OVERLOAD02	46	Overheat and overload protector (2016>)	1
W4-CAP02		Capacitor for TG1111Y Compressor	1
***	47	Rubber grommet	4
W4-COMP02	48	Compressor	1
W4-BRACKET01	49	Compressor fixture item	2
***	50	Moving board	1
***	51	Hexagon nut	4
***	52	Flat washer	12
***	53	spring washer	12
***	54	Compressor Board	1
W4-FILTER01	55	Filter Drier	1
***	56	Process tube	1
***	57	Plastic tube	1
***	58	Vaporizing Tube	1
W4-TRAY01	59	Vaporizing Tray	1
***	60	Wire clip	1
***	61	Short wire sheath	1
***	62	Fan wire	1
***	63	Fix item	1
W4-SENSOR01	64	Temperature sensor MK III (Not Carel)	1
***	65	Power Wire and Plug	1
***	66	Screw	1
***	67	Spring washer	1
***	68	Flat washer	1
***	69	Hexagon nut	1
***	70	Long earth wire	1
***	71	Short earth wire	1
***	72	Front board	1
W4-SHELF02B	73	ETL Bottom Shelf for Bar2	2
W4-SHELF06	74	Chrome Plated Wine Shelf for Bar2	8

*** Please contact Spares for assistance ***